

Im Steinenmüller 4 & 6
4142 Münchenstein

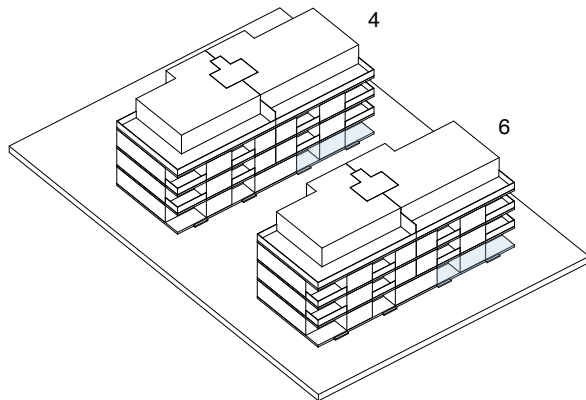
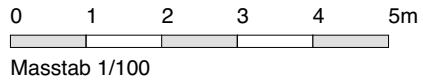
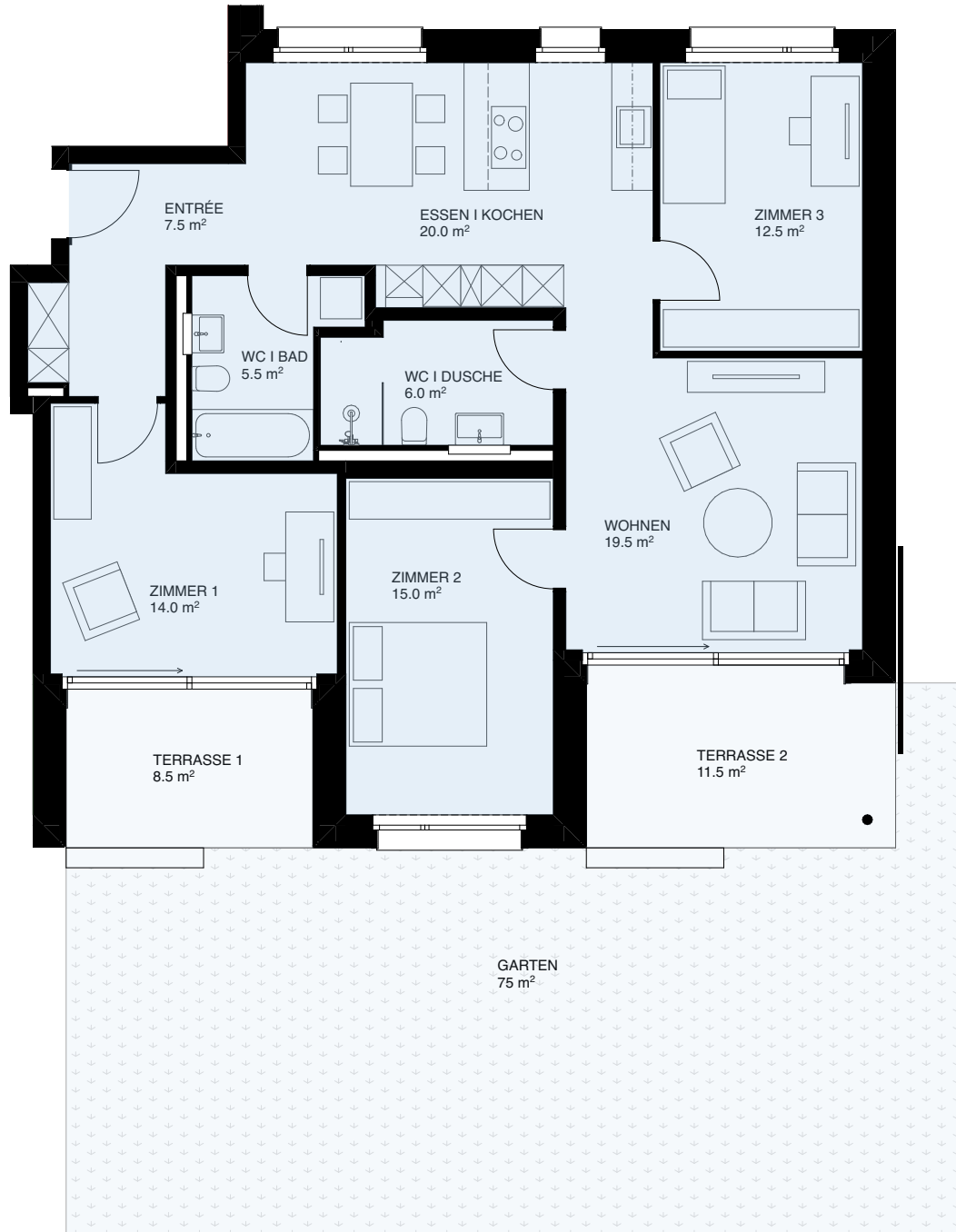
26 Mietwohnungen

EG

04 - EG.1
06 - EG.1

4.5.-Zi.-Whg.

HNF: 99m²
TERRASSE: 20m²
GARTEN: 75m²

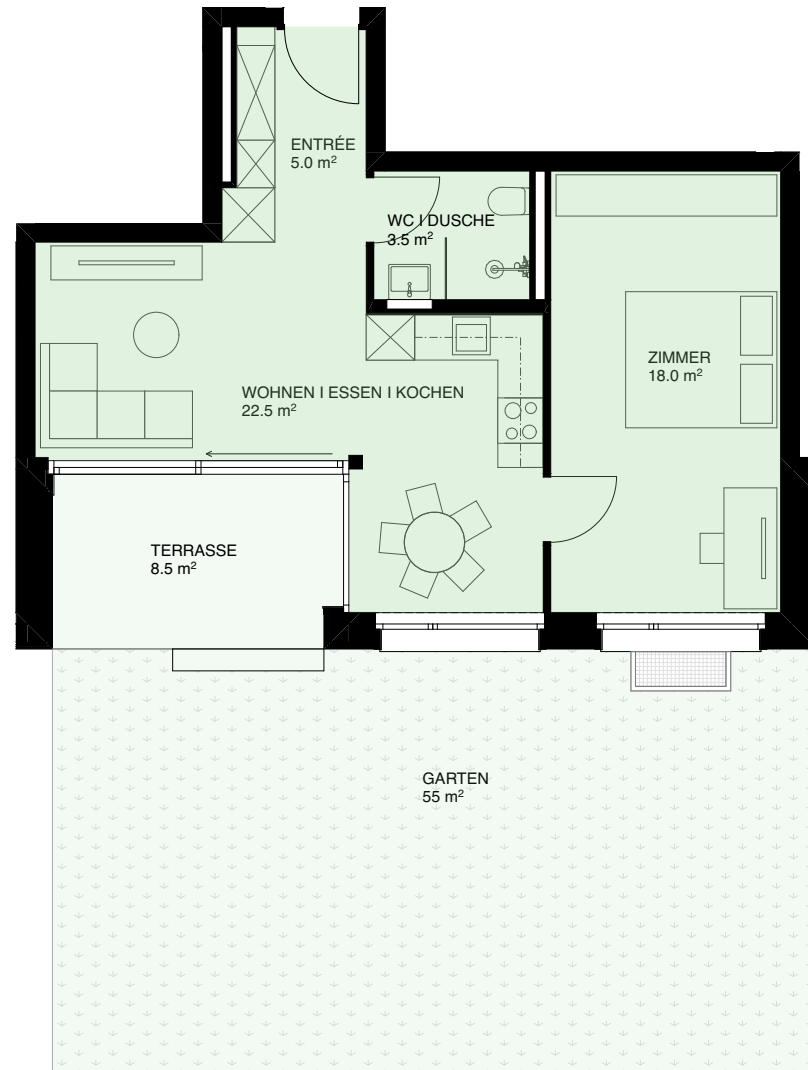
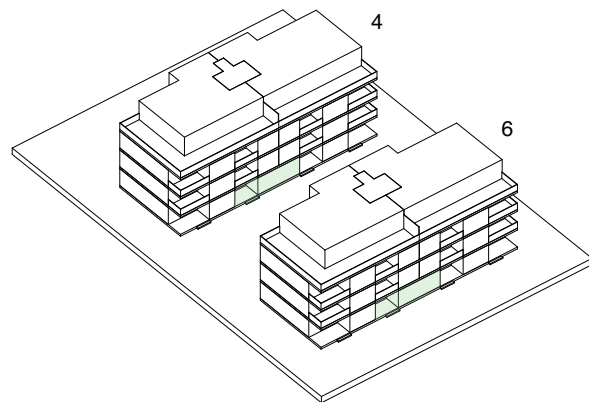
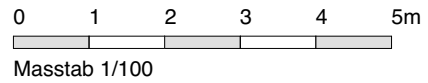


EG

04 - EG.2
06 - EG.2

2.5.-Zi.-Whg.

HNF: 48.5m²
TERRASSE: 8.5m²
GARTEN: 55m²



EG

04 - EG.3

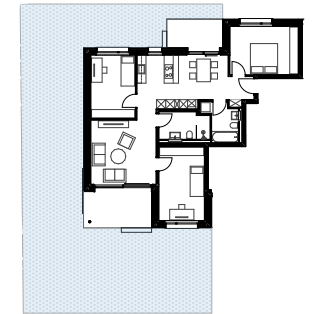
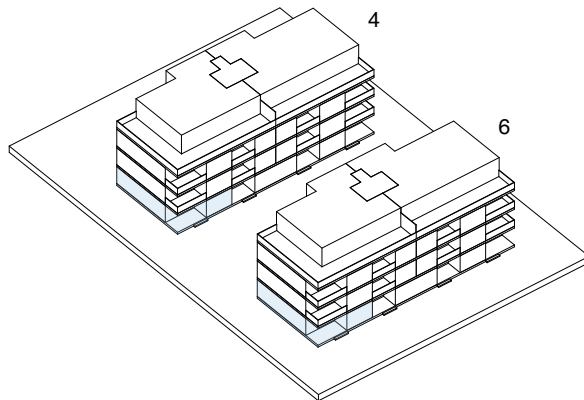
06 - EG.3

4.5.-Zi.-Whg.

HNF: 95.5m²

TERRASSE: 19m²

GARTEN: 140m²



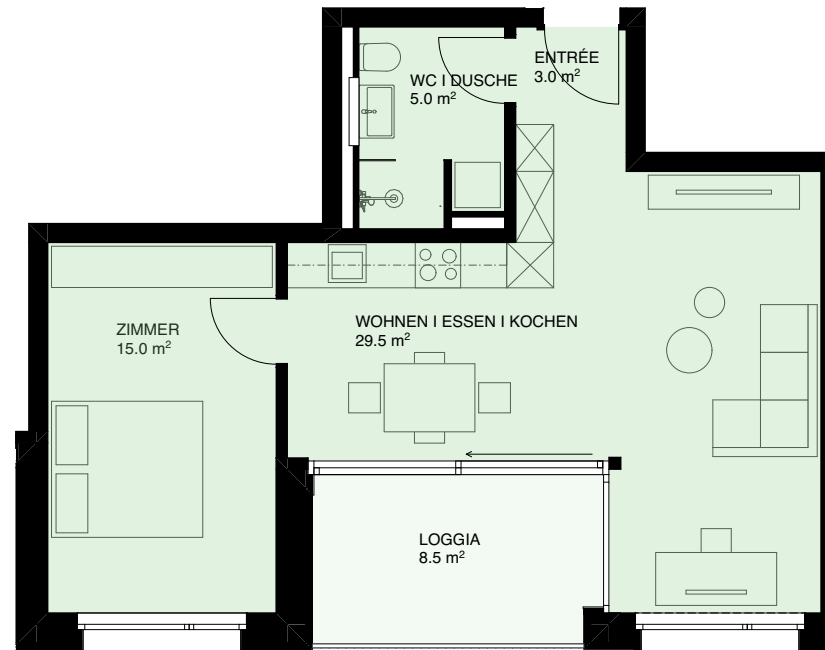
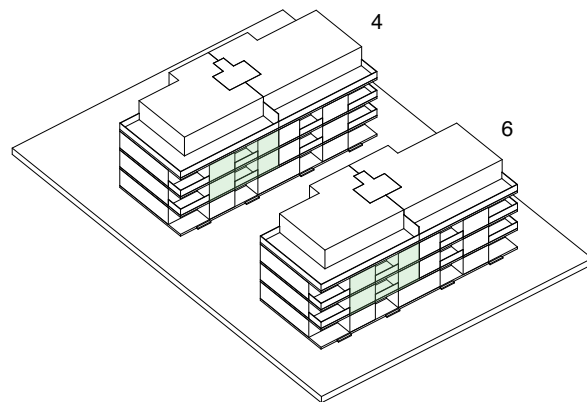
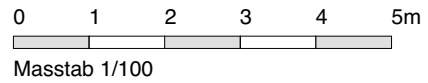
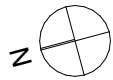
Garten gesamt - M 1/500

1.OG / 2.OG

04 - 1.1
04 - 2.1
06 - 1.1
06 - 2.1

2.5.-Zi.-Whg.

HNF: 52m²
LOGGIA: 8.5m²

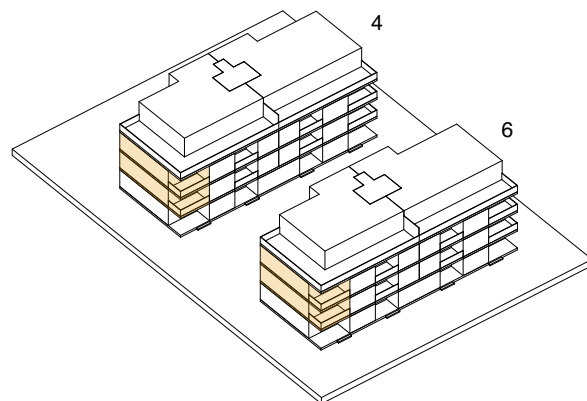
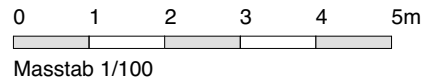
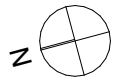


1.OG / 2.OG

04 - 1.2
04 - 2.2
06 - 1.2
06 - 2.2

3.5.-Zi.-Whg.

HNF: 77m²
LOGGIA: 11.5m²
BALKON: 7.5m²

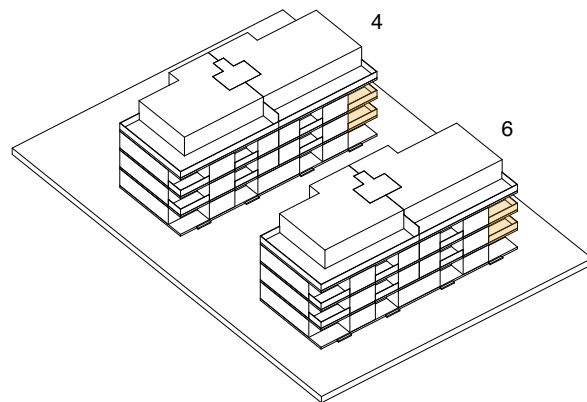
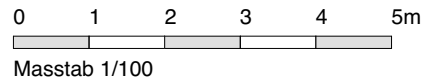


1.OG / 2.OG

04 - 1.3
04 - 2.3
06 - 1.3
06 - 2.3

3.5.-Zi.-Whg.

HNF: 77m²
LOGGIA: 11.5m²
BALKON: 7.5m²

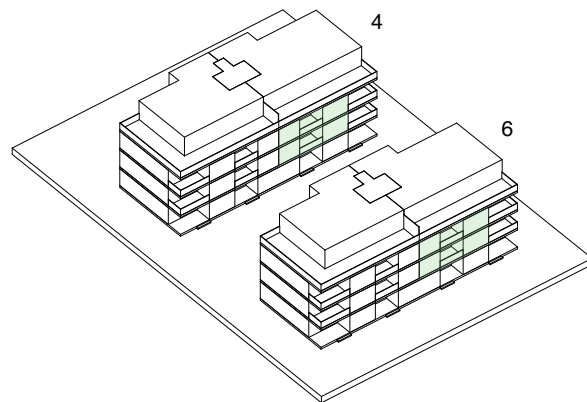
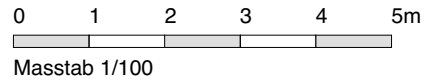
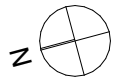


1.OG / 2.OG

04 - 1.4
04 - 2.4
06 - 1.4
06 - 2.4

2.5.-Zi.-Whg.

HNF: 52m²
LOGGIA: 8.5m²



ATTIKA

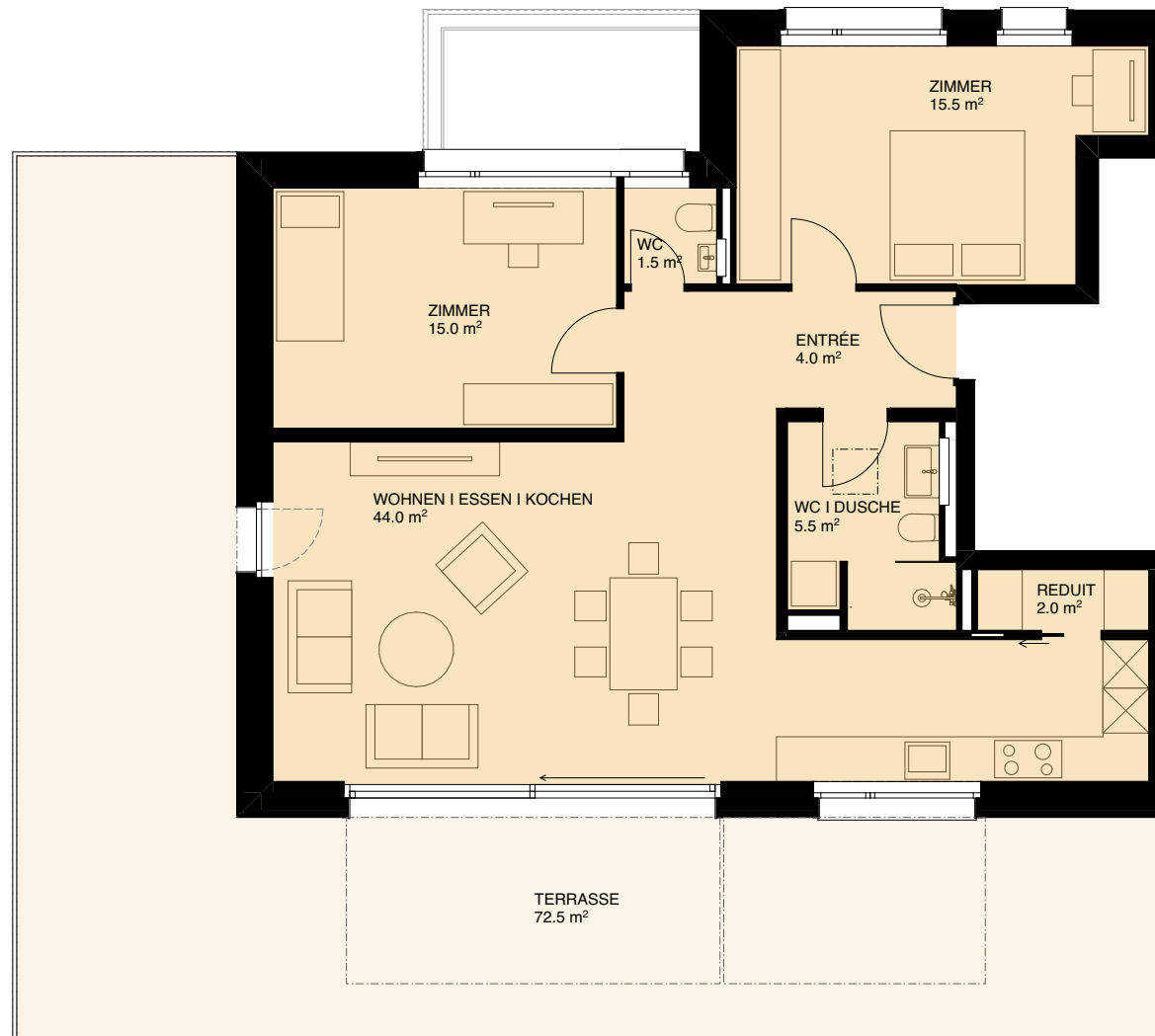
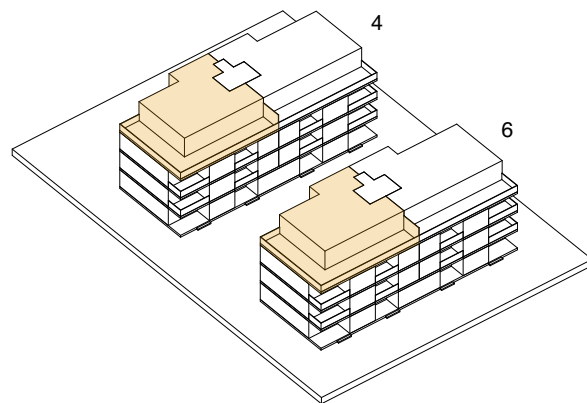
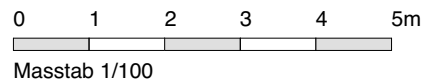
04 - 3.1

06 - 3.1

3.5.-Zi.-Whg.

HNF: 87.5m²

TERRASSE: 72.5m²



ATTIKA

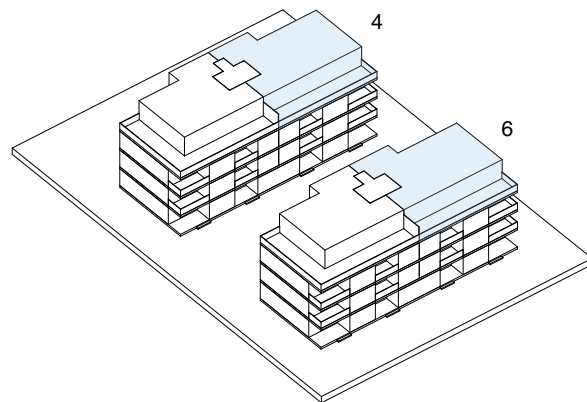
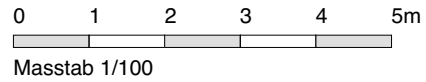
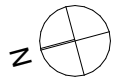
04 - 3.2

06 - 3.2

4.5.-Zi.-Whg.

HNF: 110m²

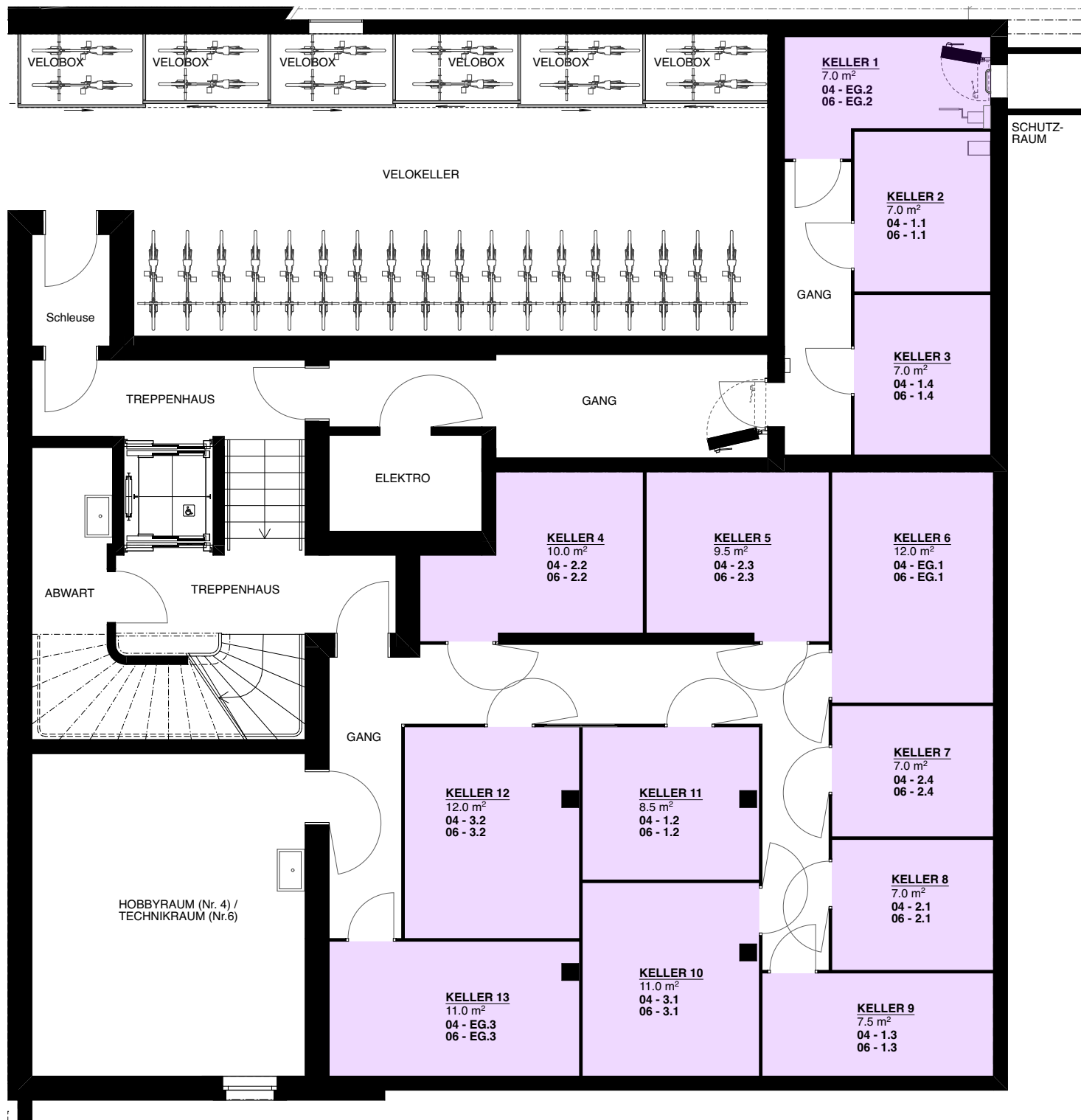
TERRASSE: 46m²



KELLER

Nr. 04 / Nr. 6

Keller 1: 7m ² 04 - EG.2 06 - EG.2	Keller 8: 7m ² 04 - 2.1 06 - 2.1
Keller 2: 7m ² 04 - 1.1 06 - 1.1	Keller 9: 7.5m ² 04 - 1.3 06 - 1.3
Keller 3: 7m ² 04 - 1.4 06 - 1.4	Keller 10: 11m ² 04 - 3.1 06 - 3.1
Keller 4: 10m ² 04 - 2.2 06 - 2.2	Keller 11: 8.5m ² 04 - 1.2 06 - 1.2
Keller 5: 9.5m ² 04 - 2.3 06 - 2.3	Keller 12: 12m ² 04 - 3.2 06 - 3.2
Keller 6: 12m ² 04 - EG.1 06 - EG. 1	Keller 13: 11m ² 04 - EG.3 06 - EG.3
Keller 7: 7m ² 04 - 2.4 06 - 2.4	



0 1 2 3 4 5m



Masstab 1/100